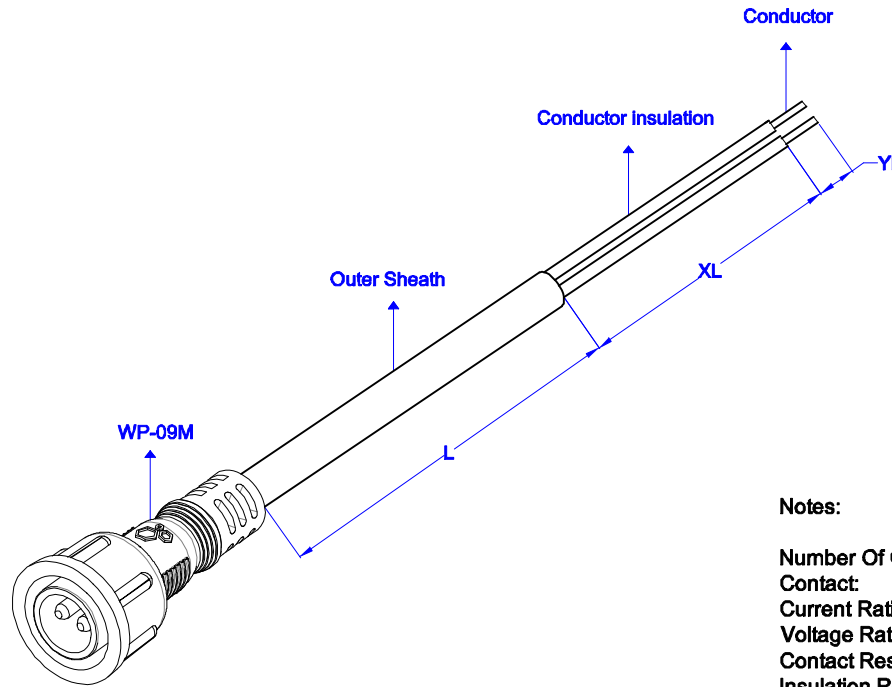


VIEW	TOLERANCE	
	0-5	±0.1
	6-10	±0.25
	11-50	±0.5
UNIT: mm	51-100	±1
	101-250	±2
	251-500	±5
	501- >	±10



**Notes:**

Number Of Contact: 2 Pin  
 Contact: Brass Nickel Plated  
 Current Rating Percontact: 5A  
 Voltage Rating: 220V AC  
 Contact Resistance: <10M Ω  
 Insulation Resistance: 1000M Ω at DC 500V.  
 Breakdown Voltage: 1,5KV / 1 minute  
 Temperature Rating: -30C°~+70C°  
 Durability (Plug/Unplug): 3000 times  
 Waterproof Rating: IP67  
 Certificate: CE ; ROHS

**ORDER CODE:**

WP-09M XXXX XX X XXX XX X  
 → Conductor Solder : if yes: Y if not: 0  
 → Conductor insulation Striping : if yes: YL (mm) if not: 00  
 → Outer Sheath Striping : if yes: XL (mm) if not: 00  
 → Color : B: Black W : White  
 → Cable : BC: PVC H05VV-F (TTR) 2x0,50mm² O.D: 5,4 ±0.2  
 BD: PVC H05VV-F (TTR) 2x0,75mm² O.D: 6,0 ±0.2  
 → Length : L (mm)

No	Material Code	Description	Size (mm)	Q'ty	Unit
6	-	PVC MOLDING (black or white)	-	-	-
5	-	PVC NUT (black or white)	-	1	pc.
4	-	GASKET (red)	-	1	pc.
3	-	TERMINAL - FEMALE	-	2	pcs.
2	-	TERMINAL - MALE	-	2	pcs.
1	-	IEC 62(RVV) 300/300V 2x0.75mm² CABLE (black or white)	-	2	pcs.

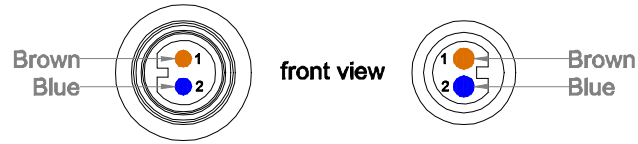
No	Material Code	Description	Size (mm)	Q'ty	Unit
----	---------------	-------------	-----------	------	------

Date	16.12.2016	Rev.	-	Revision Detail		Rev.Dt.		Rev.by		Part No	WP-09M
Designed by	Yegim AKSOY	Checked by	Fatih BOLACA								

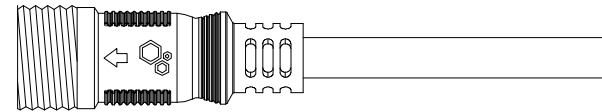
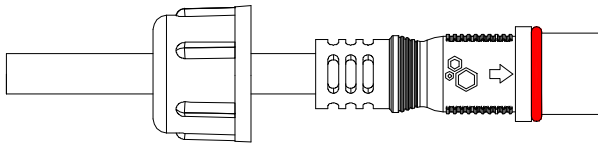


Drawing Nr.	-	Scale	NONE	Sheet No	1/2
-------------	---	-------	------	----------	-----

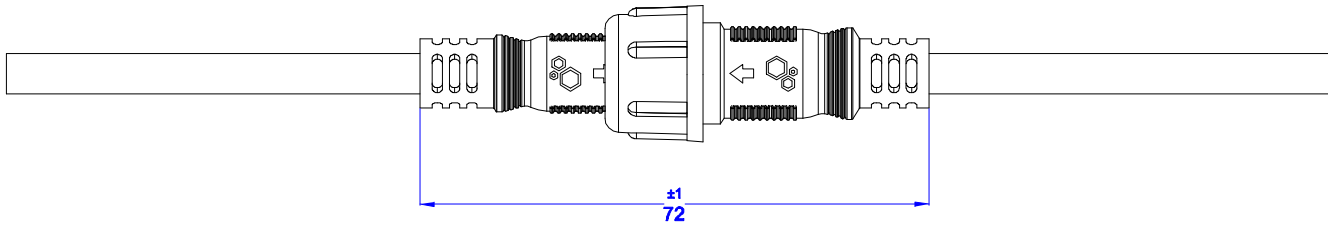
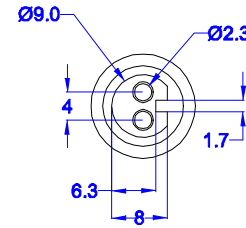
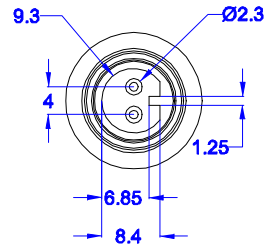
" Dimensions (mm) "



WP-09M



WP-09F



Date	16.12.2016	Rev.		Revision Detail	Rev.Dt.	Rev.by	Part No		
Designed by	Yegim AKSOY		-				WP-09F / WP-09M Connection Details		
Checked by	Fatih BOLACA						Drawing Nr.	Scale	Sheet No
							-	NONE	2/2

1

2

3

4

5

6

A4