

1. MATERIAL :

- 1-1. HOUSING :PBT UL94V-0 ; COLOR : BLACK
- 1-2. CONTACT : COPPER ALLOY
- 1-3. SHELL : COPPER ALLOY
- 1-4. NUT : COPPER ALLOY
- 1-5. O-RING : EPDM ; COLOR : BLACK
- 1-6. Epoxy Base :EF400A&EF400B. COLOR:BLACK

2. FINISH :

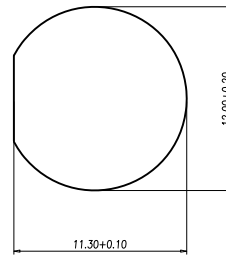
- 2-1. CONTACT :10 MICRO INCHES MIN. GOLD PLATING OVER NICKEL
- 2-2. SHELL : NICKEL PLATED 60u" ~ 100u" OVER ALL
- 2-3. NUT : NICKEL PLATED 60u" ~ 100u" OVER ALL

3. ELECTRICAL SPECIFICATION :

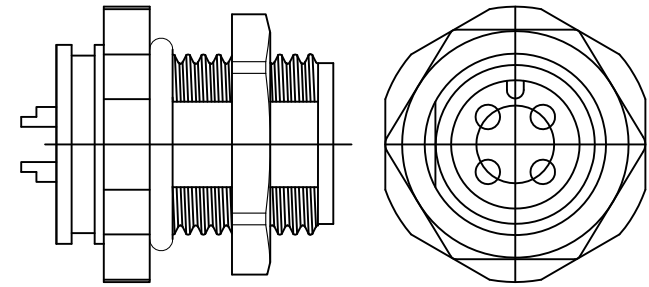
- 3-1. Rated current : 5A
- 3-2. Voltage :125V
- 3-3. Water proof: IPX7

4. Environmental :

- 4-1. Operation Temperature : -40 °C~85°C



PANEL CUT-OUT



Assembly

Date	20.05.2011	Rev.		Revision Detail	Rev.Dt.	Rev.by	Part No		
Designed by	İLKNUR	-					TT12M4P-B-A-FL-12x1.0-S-S-G10-B-N		
Checked by	A.BAHÇIVAN						Drawing Nr.	Scale	Sheet No
							-	NONE	1/1