

VIEW	TOLERANCE	
	0-10	±1
	11-250	±5
UNIT: mm	251-500	±10
	501-1000	±20
	1001-3000	±50
	3001-5000	±100
	5001->	±150

Δ Order Code : 9200-XX-M

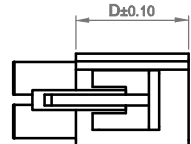
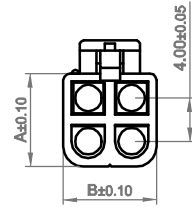
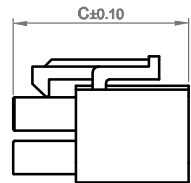
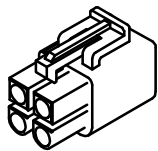
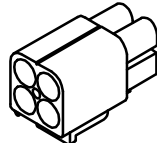
Male

Number of contact : 2 to 15 pin

**TAF
APPROVAL**

Δ Material : Nylon 66 UL 94V-0

Voltage Rating : 300V/AC
 Current Rating : 13-8AMP
 Withstanding Voltage : 1500V AC/minute
 Insulation Resistance : 1000M Ω Min
 Temperature Range : -25 °C ~ + 85 °C



Contact No.	Dimensions(mm)			
	A	B	C	D
1x1	5.70	5.70	28.10	18.30
2x1	7.20	13.40	26.80	16.80
3x1	7.20	19.60	26.80	16.80
4x1	7.20	25.80	26.80	16.80
2x2	13.40	13.40	26.80	16.80
3x2	13.40	19.60	26.80	16.80
3x3	19.60	19.60	26.80	16.80
4x3	19.60	25.80	26.80	16.80
5x3	19.60	32.00	26.80	16.80

Date	03.11.2014	Rev.	Revision Detail	Rev.Dt.	Rev.by	Part No		
Designed by	Yesim AKSOY	-				9200-XX-M		
Checked by	Fatih BOLACA							
						Drawing Nr.	Scale	Sheet No
						-	NONE	1/1