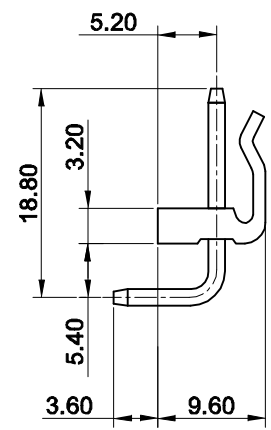
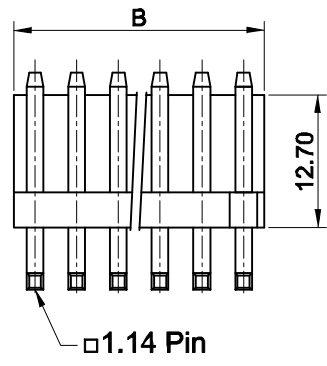
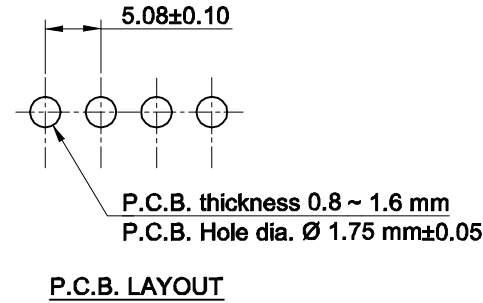
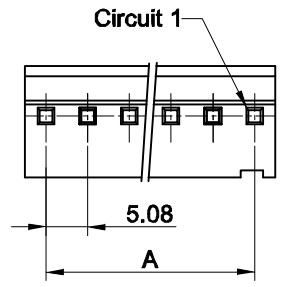


VIEW	TOLERANCE	
	0-10	±1
	11-250	±5
	251-500	±10
	501-1000	±20
	1001-3000	±50
	3001-5000	±100
UNIT: mm	5001- >	±150



Contact No.	Dimensions	
	A	B
2	5.08	10.08
3	10.16	15.16
4	15.24	20.24
5	20.32	25.32
6	25.40	30.40
7	30.48	35.48
8	35.56	40.56
9	40.64	45.64
10	45.72	50.72
11	50.80	55.80
12	55.88	60.88
13	60.96	65.96
14	66.04	71.04
15	71.12	76.12
16	76.20	81.20
17	81.28	86.28
18	86.36	91.36
19	91.44	96.44
20	96.52	101.52

* Order Code : 2220 - XX - RB

* Material Pin.... Brass/Tin plated
Nylon 66, UL94V-0

Number of contact : 2 to 20 pin

Rated Voltage : 250V AC,DC
 Rated Current : 7A.
 Withstand Voltage : 1500V AC/minute
 Insulation Resistance : 1.000M ohm/minute
 Temperature Range : -25 °C ~ + 85 °C
 Contact Resistance : 20m ohm/max.

Date	03.11.2014	Rev.		Revision Detail	Rev.Dt.	Rev.by	Part No		
Designed by	Yeşim AKSOY	-					2220-XX-RB		
Checked by	Fatih BOLACA								
							Drawing Nr.	Scale	Sheet No
							-	NONE	1/1