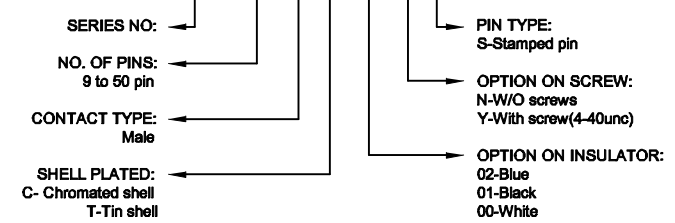


VIEW	TOLERANCE	
	0-10	±1
	11-250	±5
	251-500	±10
	501-1000	±20
	1001-3000	±50
UNIT: mm	3001-5000	±100
	5001- >	±150



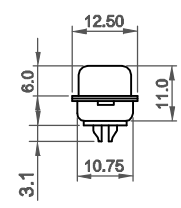
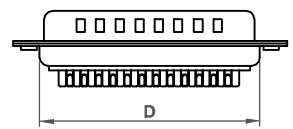
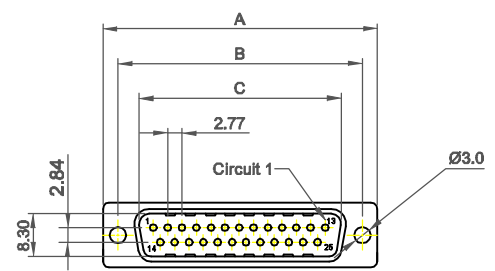
Δ Order Code : 1201-XX-M-X-XX-X-X



Δ Material : PBT + 30 % Glass Fiber (UL 94V-0)
 Contact Material : Brass or Phosphor Bronze

TTAF APPROVAL

Voltage Rating : 250V AC,DC
 Current Rating : 5A
 Withstanding Voltage : 1000V AC/minute
 Insulation Resistance : 1000M ohm/minute
 Temperature Range : -55 °C ~ + 105 °C
 Contact Resistance : 30m Ω Max.



Contact No.	Dimensions(mm)			
	A	B	C	D
9	30.85	25.00	18.10	19.10
15	39.25	33.32	26.10	27.60
25	53.10	47.04	39.96	41.10
37	69.40	63.50	55.42	57.30
50	67.10	61.00	54.30	55.00

Date	03.11.2014	Rev.	-	Revision Detail		Rev.Dt		Rev.by		Part No	1201-XX-M		
Designed by	Yeşim AKSOY	Checked by	Fatih BOLACA							Drawing Nr.		Scale	Sheet No
										NONE		1/1	

