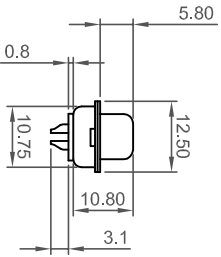
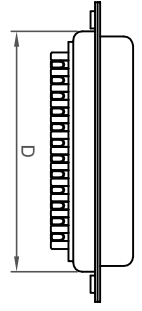
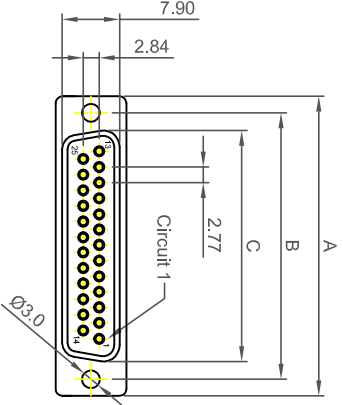


Δ Material : PBT + 30 % Glass Fiber (UL 94V-0)
Contact Material : Brass or Phosphor Bronze

Voltage Rating : 250V AC,DC
Current Rating : 5A
Withstanding Voltage : 1000V AC/minute
Insulation Resistance : 1000M ohm/minute
Temperature Range : -55 °C ~ + 105 °C
Contact Resistance : 30m Ω Max.



Contact No.	Dimensions(mm)			
	A	B	C	D
9	30.85	25.00	16.92	19.20
15	39.25	33.32	25.25	27.70
25	53.05	47.04	38.96	41.10
37	69.40	63.50	55.42	57.30
50	67.08	61.00	52.20	55.10

Date : 09.01.2007

Designed by : HELEN

Checked by : NERGİLER



Rev. No

Revision Detail

Rev.Dt. Rev.by

Drawing Nr.

Model

Project Name : **1201-XX-F**

File Name : -
Scale : NONE
Sheet No : 1/1

VIEW:	TOLERANCE
	.0 ±0.25
	.00 ±0.10
UNIT: mm	.000 ±0.05

1

2

3

4

5

1

2

3

4

5